

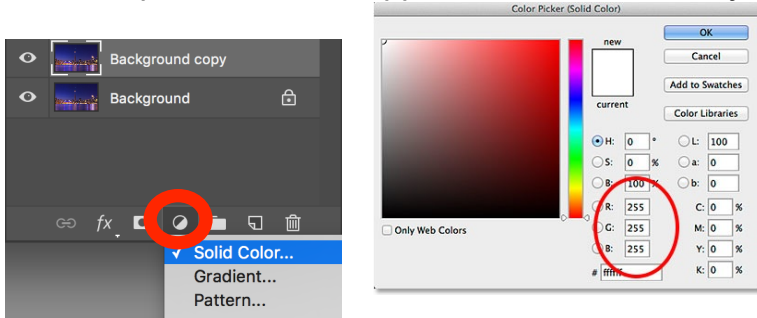
Creative Challenge 1: Image In Text

Step 1: Duplicate The Background Layer

Open the image of the **toronoto cityscape** and duplicate the **Background layer** - Name the copy layer.

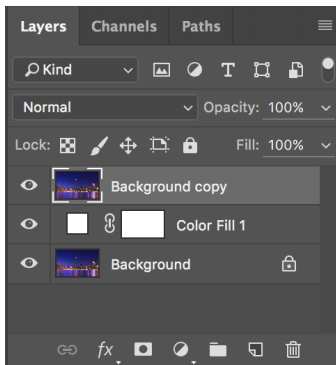
Step 2: Add A White Solid Color Fill Layer

Click on the **Adjustment Layer** icon at the bottom of the Layers panel: Choose **Solid Color** from the top of the list that appears: Use **white** for my background color.



Step 3: Select layer

The image is temporarily hidden by the Fill Layer. Drag the Fill layer between the Background layer and image layer. Click on top layer in the Layers panel to select:



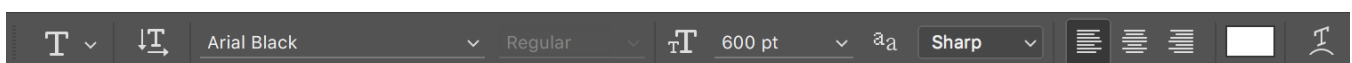
Step 4: Select The Type Tool

Select **Type Tool** from the Tools panel along the left of the screen.



Step 5: Choose Your Font & Colour

With the Type Tool selected, go up to the **Options Bar** along the top of the screen and choose your font and change colour to white.



* Note: Since our goal is to place an image within the text, generally fonts with thick letters work best.

Selecting a font/colour from the Options Bar.

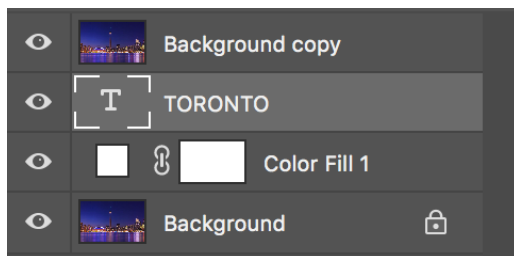
Step 6: Add Your Text

Click inside your document and add your text. Then, type the word: Adding my text.



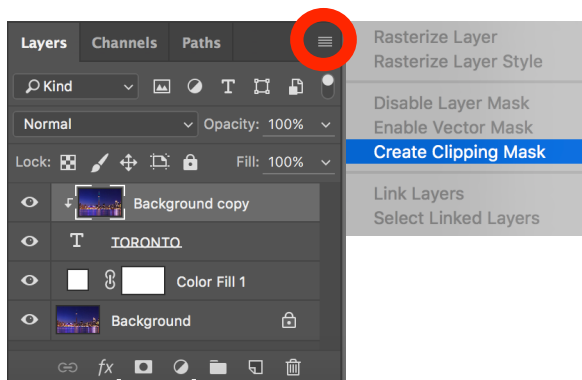
Step 7: Drag The Type Layer Below image layer- image and Select image layer:

Dragging the Type layer below image layer.



Step 8: Create A Clipping Mask

With (image) layer selected, click on the small menu icon in the top right corner of the Layers panel or right click on layer:



The Layers panel showing image layer clipped to the Type layer - with small arrow pointing down at the type layer.

Step 9: Select The Type Layer - resize and reposition it.

Click on the **Type** layer to select it and make it active. Resize text - press **Command+T** (Mac) to free transform text.



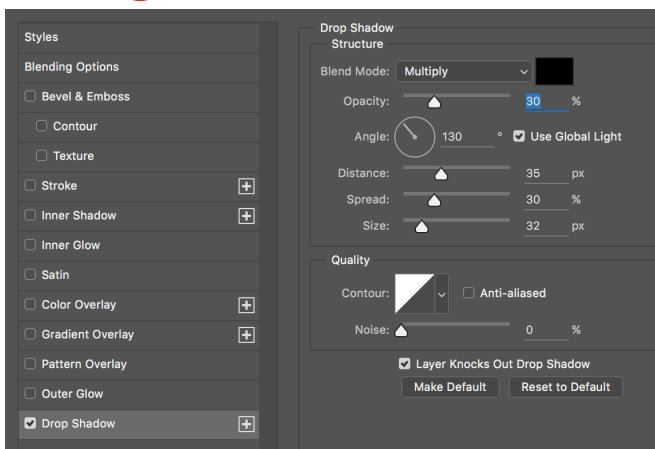
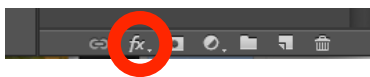
OPTIONAL:

Step 10: Change the opacity of the colour fill layer to around 50-80%.



Step 11: Add A Drop Shadow to text layer

Click on the **Layer Styles** icon (the **"fx"** icon) at the bottom of the Layers panel - choose **drop shadow**.



The final effect.